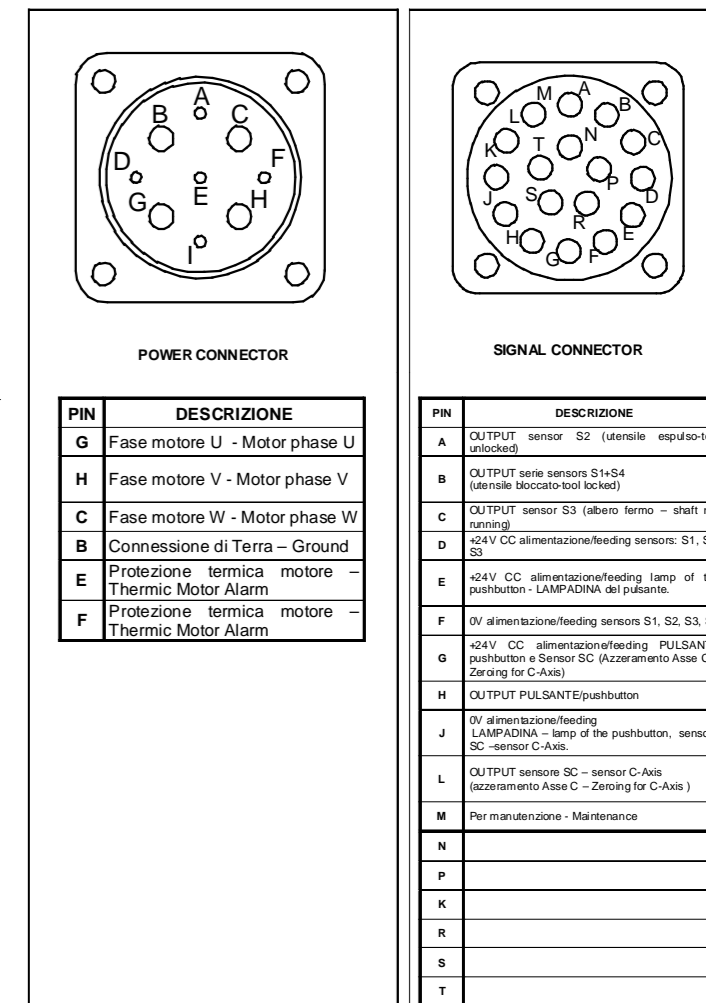
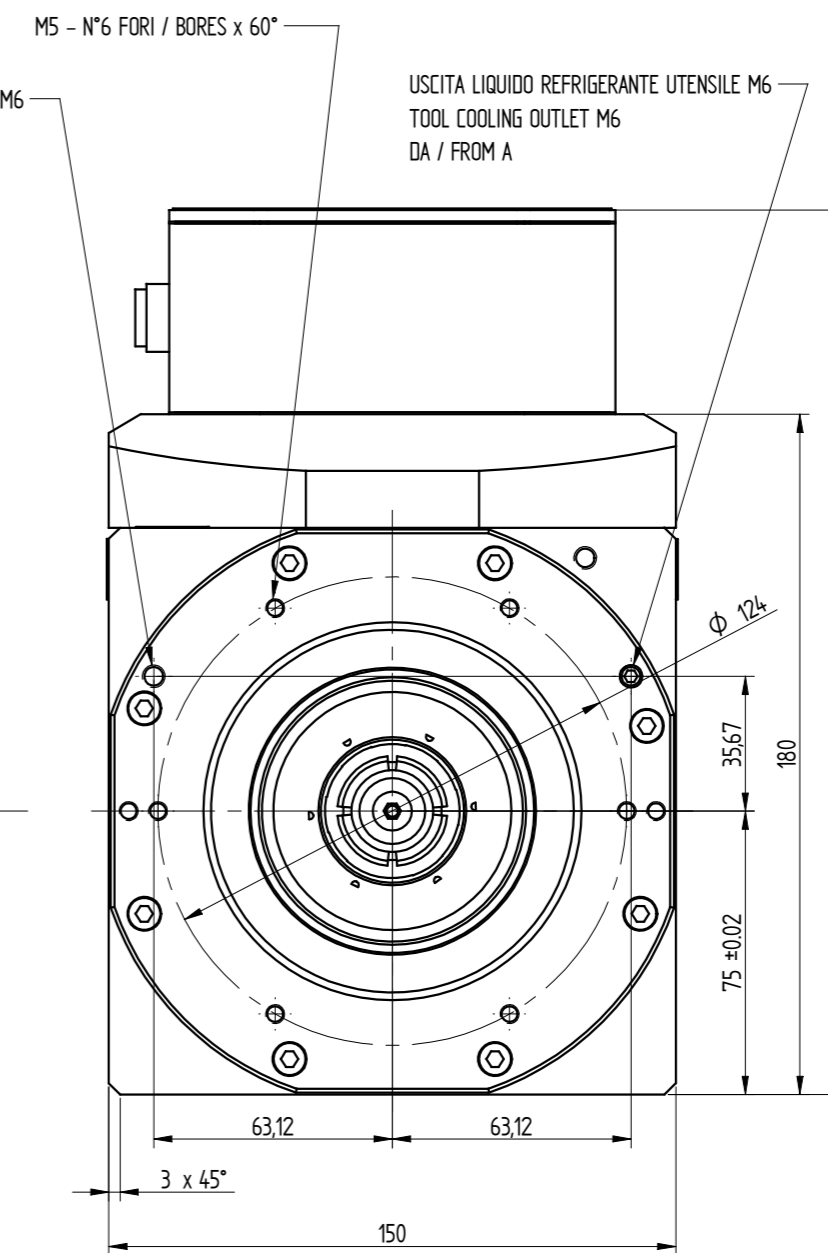
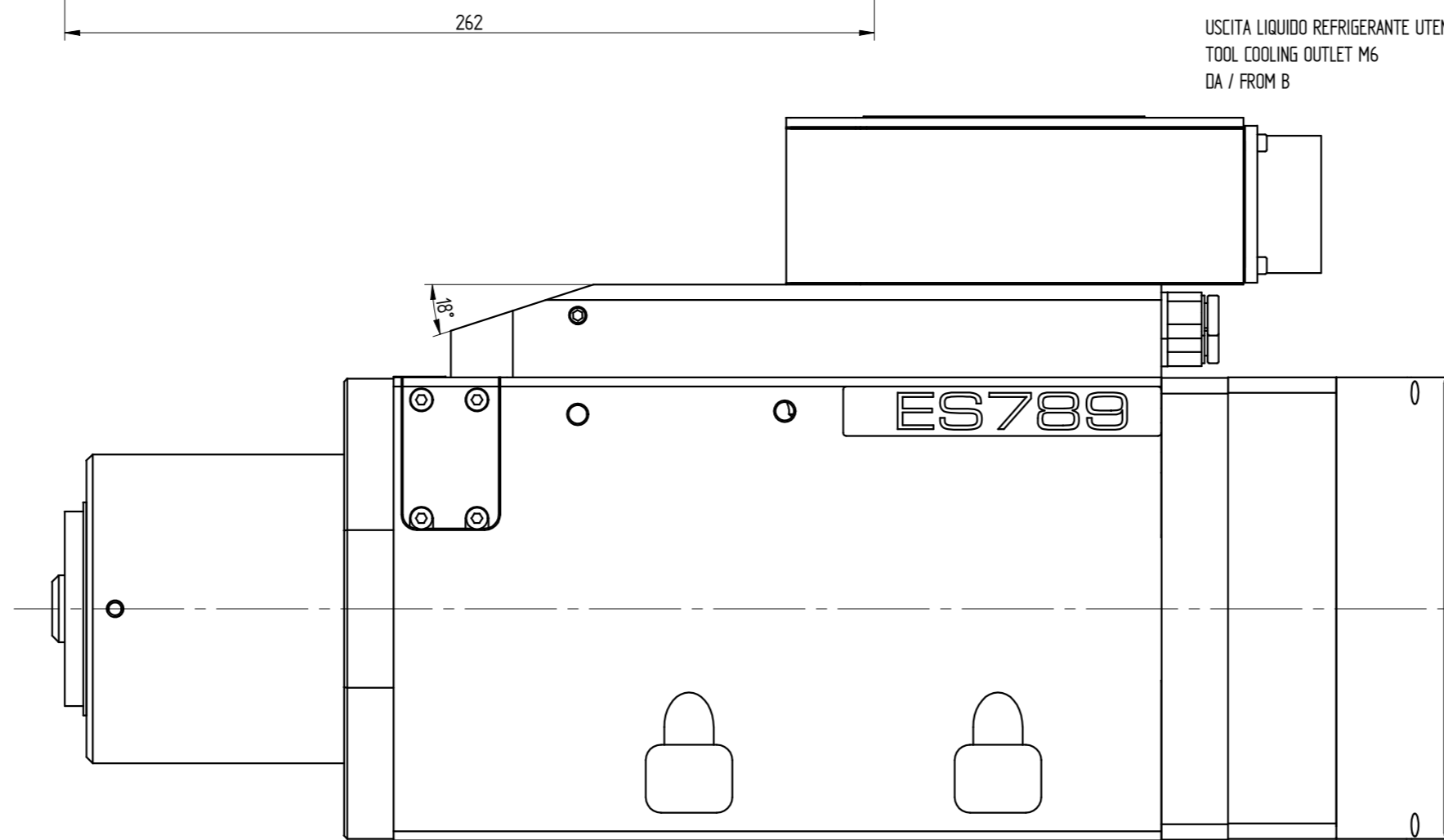
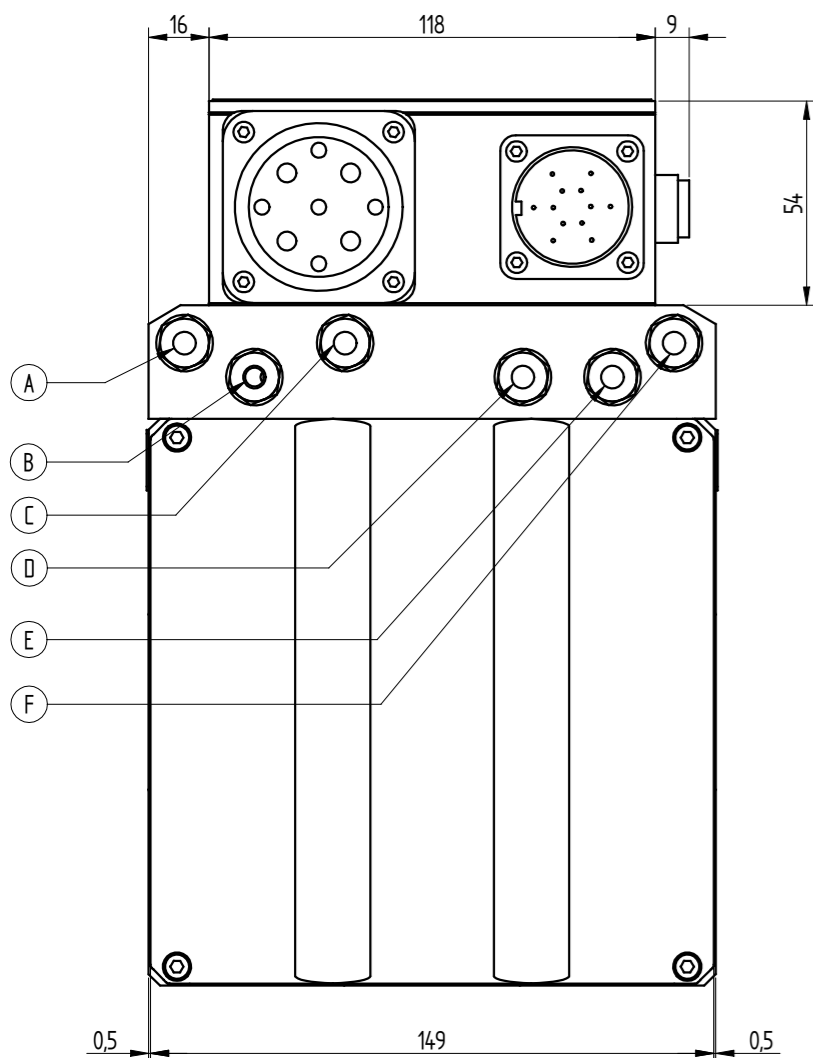
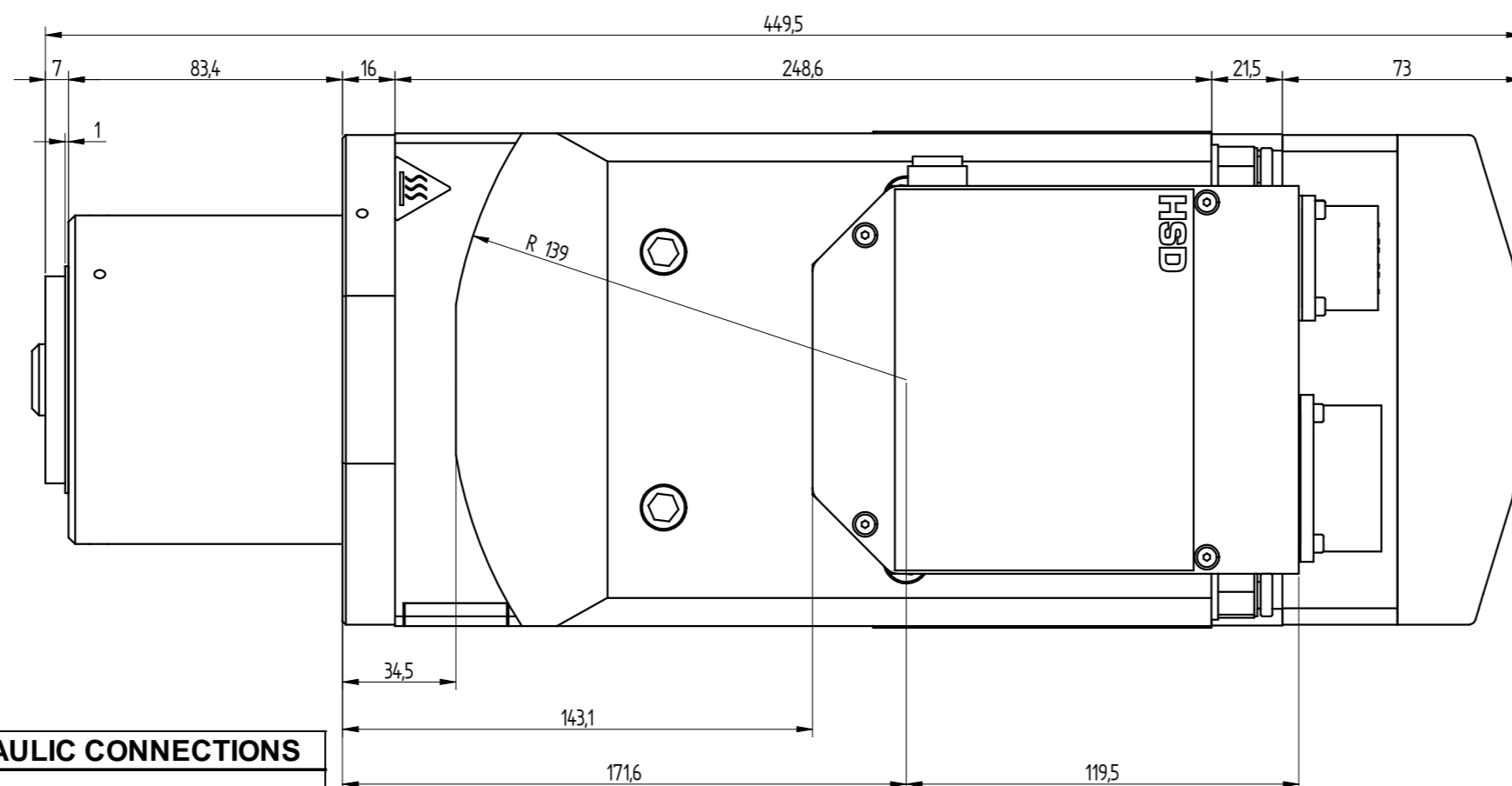
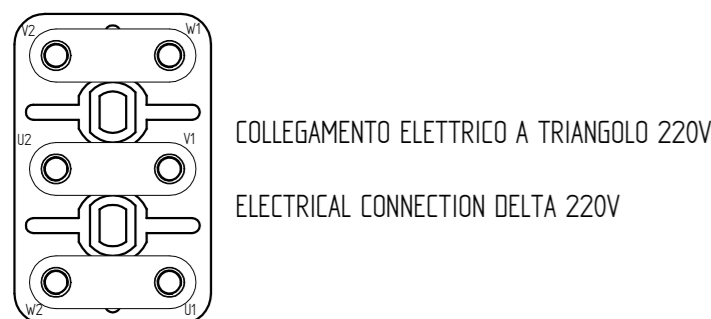
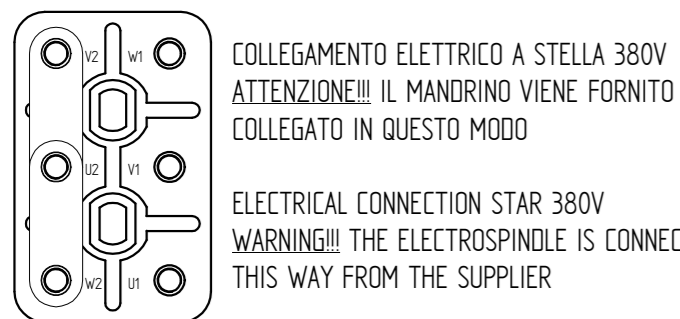


1:5



PIN	DESCRIZIONE
G	Fase motore U - Motor phase U
H	Fase motore V - Motor phase V
C	Fase motore W - Motor phase W
B	Connessione di Terra - Ground
E	Protezione termica motore - Thermic Motor Alarm
F	Protezione termica motore - Thermic Motor Alarm

PIN	DESCRIZIONE
A	OUTPUT sensor S2 (utensile espulso-tool unlocked)
B	OUTPUT senso sensors S1+S4 (utensile bloccato-tool locked)
C	OUTPUT sensor S3 (albero fermo - shaft not running)
D	+24V CC alimentazione/feeding sensor: S1, S2, S3
E	+24V CC alimentazione/feeding lamp of the pushbutton - LAMPADINA del pulsante
F	0V alimentazione/feeding sensor S1, S2, S3, S4
G	+24V CC alimentazione/feeding PULSANTE pushbutton Sensor SC (Azzeramento Asse C - Zeroing for C-Axis)
H	OUTPUT PULSANTE/pushbutton
J	0V alimentazione/feeding LAMPADINA - lamp of the pushbutton, sensor SC - sensor C-Axis
L	OUTPUT sensore SC - sensor C-Axis (azzeramento Asse C - Zeroing for C-Axis)
M	Per manutenzione - Maintenance
N	
P	
K	
R	
S	
T	



UTENZE PNEUMATICHE E IDRAULICHE / PENUMATIC & HYDRAULIC CONNECTIONS	
RIF	DESCRIZIONE / DESCRIPTION
A	Ø6 - Ingresso liquido refrigerante utensile / Tool cooling liquid inlet
B	Ø6 - Ingresso liquido refrigerante utensile / Tool cooling liquid inlet
C	Ø6 - Ingresso liquido refrigerante elettromandrino / Electrospindle cooling liquid inlet
D	Ø6 - Uscita liquido refrigerante elettromandrino / Electrospindle cooling liquid outlet
E	Ø6 - Ingresso aria pressurizzazione e pulizia cono / Pressurization and cone cleaning air inlet
F	Ø6 - Ingresso/uscita aria per cambio utensile / Tool release air I/O

<p>REVISIONE E/O DIFFUSIONE VIETATA / REPRODUCTION AND/OR DISCLOSURE OF THE DRAWING IS FORBIDDEN</p>		<p>REV. DESCRIZIONE REVISIONE / REVISION DESCRIPTION DATA / DATE FIRMA SIGN</p>	
<p>DATA DATE</p> <p>24/05/2013</p>	<p>DISEGNATO / DRAW BY</p> <p>CONTROLLATO / CHECKED BY</p> <p>APPROVATO / APPROVED</p>	<p>SCALA : SCALE :</p> <p>1 : 2</p>	<p>PESO : WEIGHT :</p> <p>35,288 kg</p>
<p>FIRMA SIGN</p> <p>Bugari M.</p>	<p>MATERIALE : MATERIAL :</p> <p>TRATTAMENTO TERMICO : HEAT TREATMENT :</p> <p>RIVESTIMENTO SUPERFICIALE : SURFACE TREATMENT :</p> <p>CICLO DI VERNICIATURA : PAINTING CYCLE :</p> <p>DENOMINAZIONE : DESCRIPTION :</p>	<p>SOSTITUISCE : REPLACE :</p>	<p>QUOTE SENZA INDICAZIONE DI TOLLERANZA / POSITIONS WITHOUT TOLERANCE INFORMATION - LAVORAZIONI MECCANICHE : MECHANICAL WORKINGS : UNI EN 22768-FH</p> <p>SALDOCARPENTERIE : WELDMENT :</p> <p>GETTI / MELT CASTING :</p>
<p>DIM. ES789 F63 NL 15kWDP 220/380V BAS.MIL NO ENC</p>			<p>REVISIONE REVISION</p> <p>0</p> <p>CODICE ARTICOLO / DRAWING NO</p> <p>5530H0691</p>